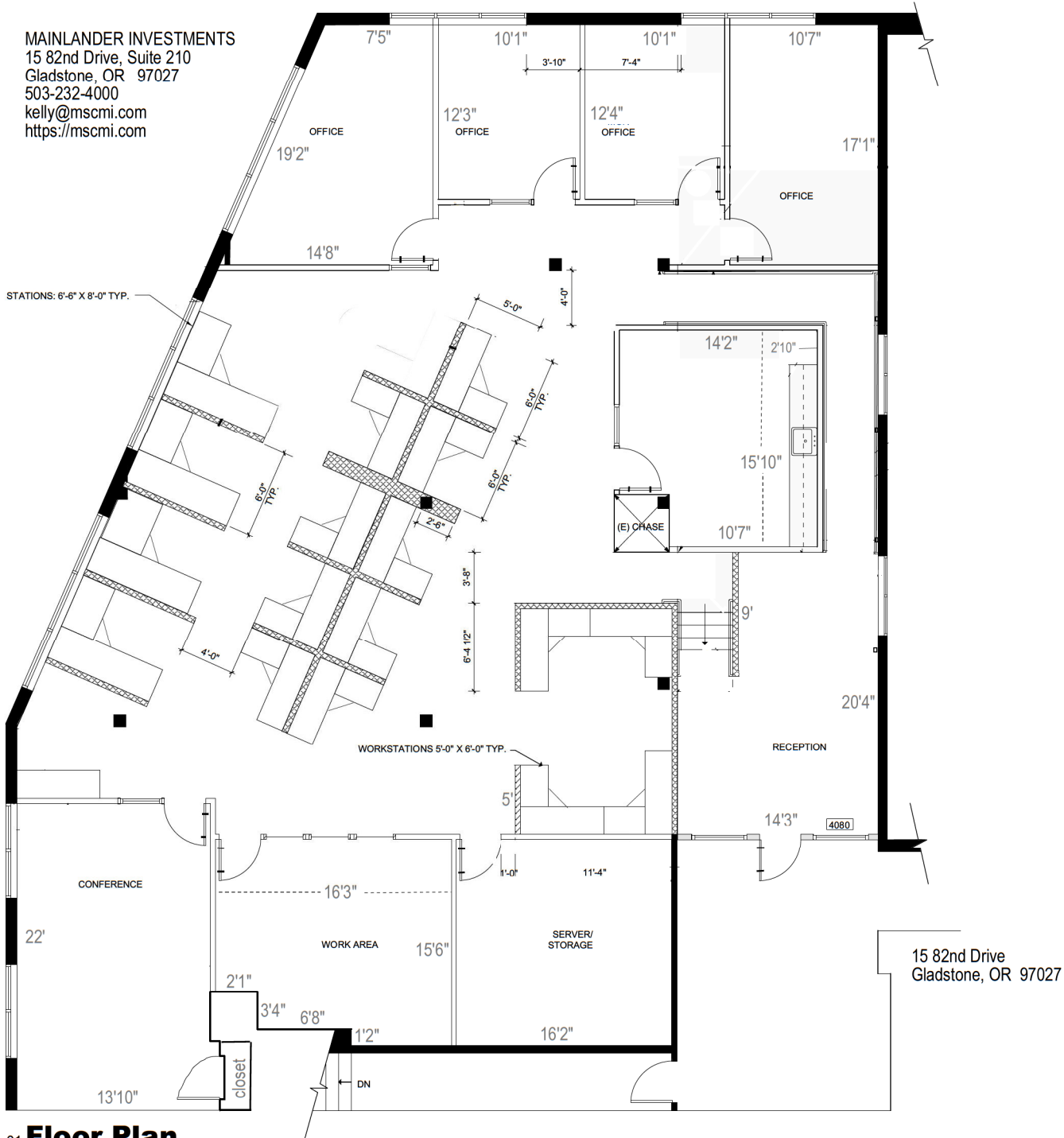


MAINLANDER INVESTMENTS
 15 82nd Drive, Suite 210
 Gladstone, OR 97027
 503-232-4000
 kelly@mscmi.com
 https://mscmi.com



01. **Floor Plan**

SCALE: 1/8" = 1'-0"



820 N River St, Suite 103
 Portland OR 97227
 www.stueveroyce.com
 p.503.287.6404
 f.503.213.5909

FLOOR PLAN

ISSUES & REVISIONS			
no.	date	by	check
1	06/12/04		

CLACKAMAS RIVER PLAZA
 GLADSTONE, OREGON
 Job Number: 04018
 Date: 07 JULY 2004
 Cover Sheet/ Floor Plan

A2.0

© STUEVE & ROYCE ARCHITECTURE, INC. 2004
DO NOT REPRODUCE WITHOUT PERMISSION